

**PS140/250 (A325/A326)**

# PARTS CATALOG

## INTRODUCTION

This chapter instructs you the numbers and names of these parts on this machine.

### INDEX to PARTS CATALOG

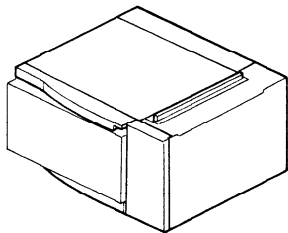
<b>LOCATION OF UNIT</b> .....	<b>2</b>
1. EXTERIOR (A325/A326) .....	4
2. VERTICAL TRANSPORT SECTION (A326) .....	6
3. VERTICAL TRANSPORT SECTION (A325) .....	8
4. PAPER FEED TRAY (A325/A326) .....	10
5. PAPER FEED SECTION (A325/A326) .....	12
6. TRAY LIFT SECTION (A325/A326) .....	14
7. DRIVE SECTION (A325/A326) .....	16
8. FRAME SECTION (A325/A326) .....	18
9. INTERFACE BOARD (A325/A326) .....	20
10. MAIN HARNESS (A325) .....	22
11. MAIN HARENSS (A326) .....	24
12. DECAL AND DOCUMENT (A325/A326) .....	26
13. SPECIAL TOOL (A325/A326) .....	28
<b>Parts Index</b> .....	<b>31</b>

Index No.	Part No.	Description	Q'ty per Assembly
***	**** **	*****	1 (1)



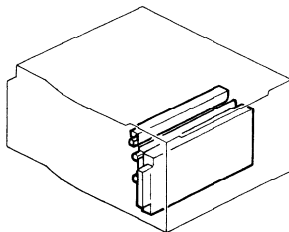
# LOCATION OF UNIT

## 1. EXTERIOR (A325/A326)



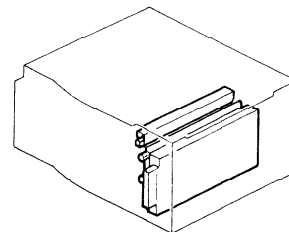
See Page 4

## 2. VERTICAL TRANSPORT SECTION (A326)



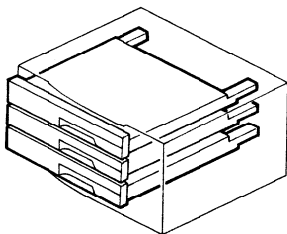
See Page 6

## 3. VERTICAL TRANSPORT SECTION (A325)



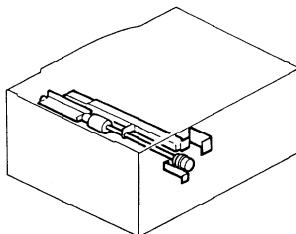
See Page 8

## 4. PAPER FEED TRAY (A325/A326)



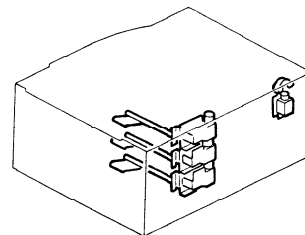
See Page 10

## 5. PAPER FEED SECTION (A325/A326)



See Page 12

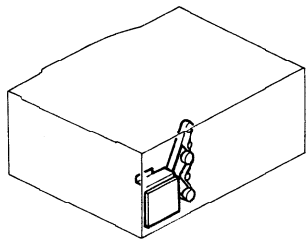
## 6. TRAY LIFT SECTION (A325/A326)



See Page 14

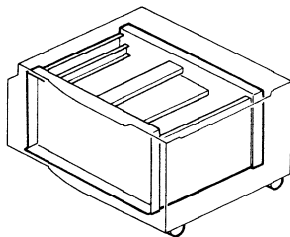
**LOCATION OF UNIT**

**7. DRIVE SECTION (A325/A326)**



See Page 16

**8. FRAME SECTION (A325/A326)**



See Page 18

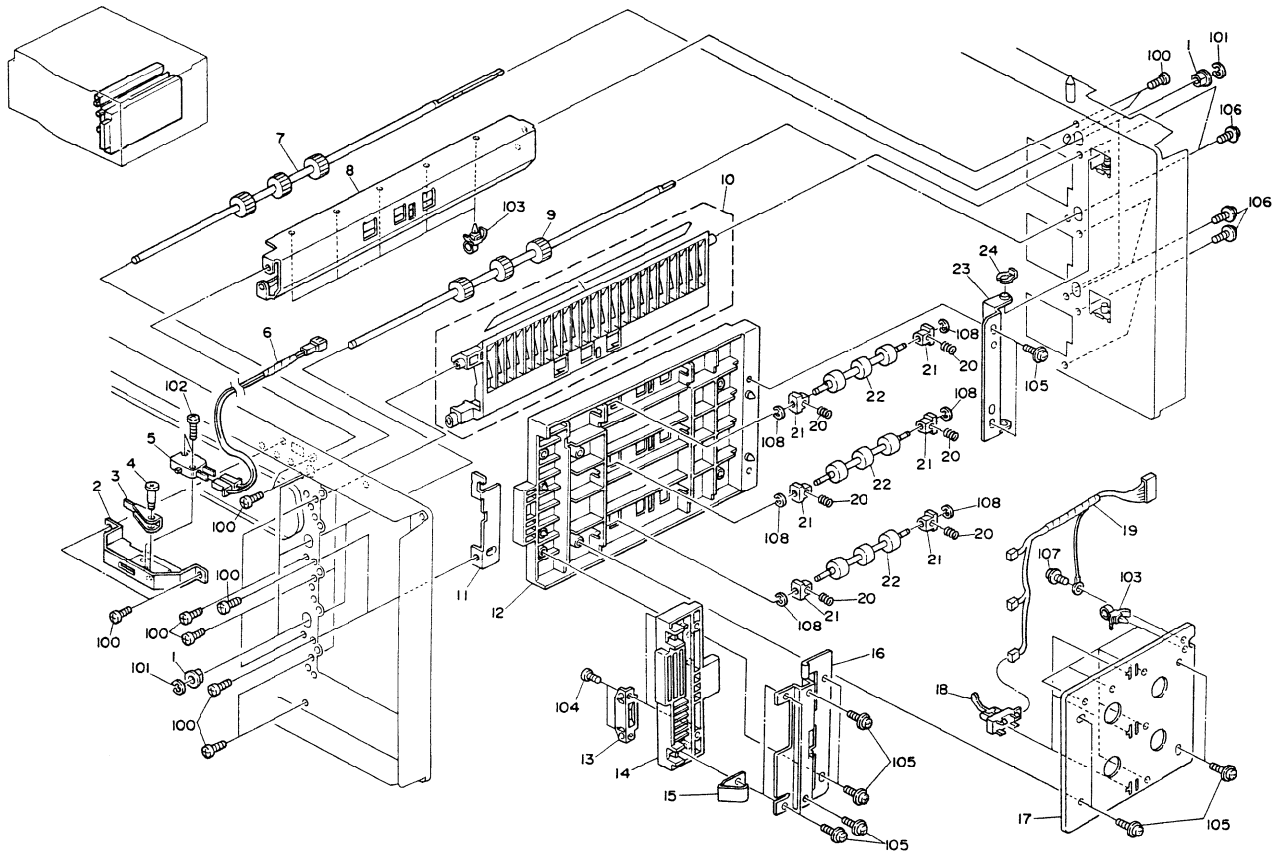


## 1. EXTERIOR (A325/A326)

Index No.	Part No.	Description	Q'ty per Assembly
1	A326 1270	Left Cover	1( 1)
2	A326 1277	Cover Bracket	8( 8)
3	A069 2786	Left Stopper - Paper Tray	3( 1)
4	A326 1281	Exterior Plate Bracket	3( 3)
5	AG07 0004	Magnet Catch	1( 3)
6	A326 1098	Fixing Plate	1( 1)
7	A326 1280	Upper Exterior Plate	1( 1)
8	A326 1302	Rear Cover Bracket	2( 2)
9	A326 1310	Upper Rear Cover	1( 1)
10	A326 1300	Rear Cover	1( 1)
11	A326 1325	Heater Cover	1( 1)
12	A499 1378	Stepped Screw - M4x6	3( 3)
13	A326 1303	Right Bracket - Rear Cover	1( 1)
14	A326 2870	Relay Guide Plate	1( 1)
15	A326 1311	Upper Right Cover	1( 1)
16	A326 1275	Right Cover	1( 1)
17	AG06 0038	Front Door Hinge	2( 2)
18	A326 1261	Door Switch Actuator	1( 1)
19	A326 1260	Front Door	1( 1)
20	A326 1285	Lower Exterior Plate (A326)	1
21	A069 2796	Right Stopper - Paper Tray	3( 1)
22	A326 1056	Lower Cover Bracket (A326)	2
23	A325 1296	Lower Cover Stopper (A325)	( 1)
24	A325 1283	Right Base Bracket (A325)	( 1)
25	A325 1280	Left Base Bracket (A325)	( 1)
26	A325 1293	Door Catch Bracket (A325)	( 2)
27	A325 1294	Bracket Cover (A325)	( 2)
28	A325 1292	Lower Door Cover (A325)	( 1)
29	A325 1295	Door Catch Bracket (A325)	( 1)
30	A325 1286	Right Cover Bracket (A325)	( 1)
31	A325 1285	Left Cover Bracket (A325)	( 1)
32	5447 2681	Snap Ring (A325)	( 1)

Index No.	Part No.	Description	Q'ty per Assembly
100	0802 5094	Tapping Truss Head Screw - M4x8	
101	0434 0080W	Tapping Screw - M4x8	
102	0413 0060F	Philips Truss Head Screw - M3 x 6	
103	0964 4008W	Tapping Screw with Flat Washer - M4x8	
104	0965 4010W	Tapping Screw with Flat Washer - M4x10	
105	0965 4012W	Philips Pan Head Screw - M4x12	
106	0804 9004	Push Nut - M4	
107	0965 4008W	Tapping Screw with Flat Washer - M4x8	
108	0314 0080W	Philips Pan Head Screw - M4x8	
109	0950 4008M	Screw - M4x8	

## 2. VERTICAL TRANSPORT SECTION (A326)



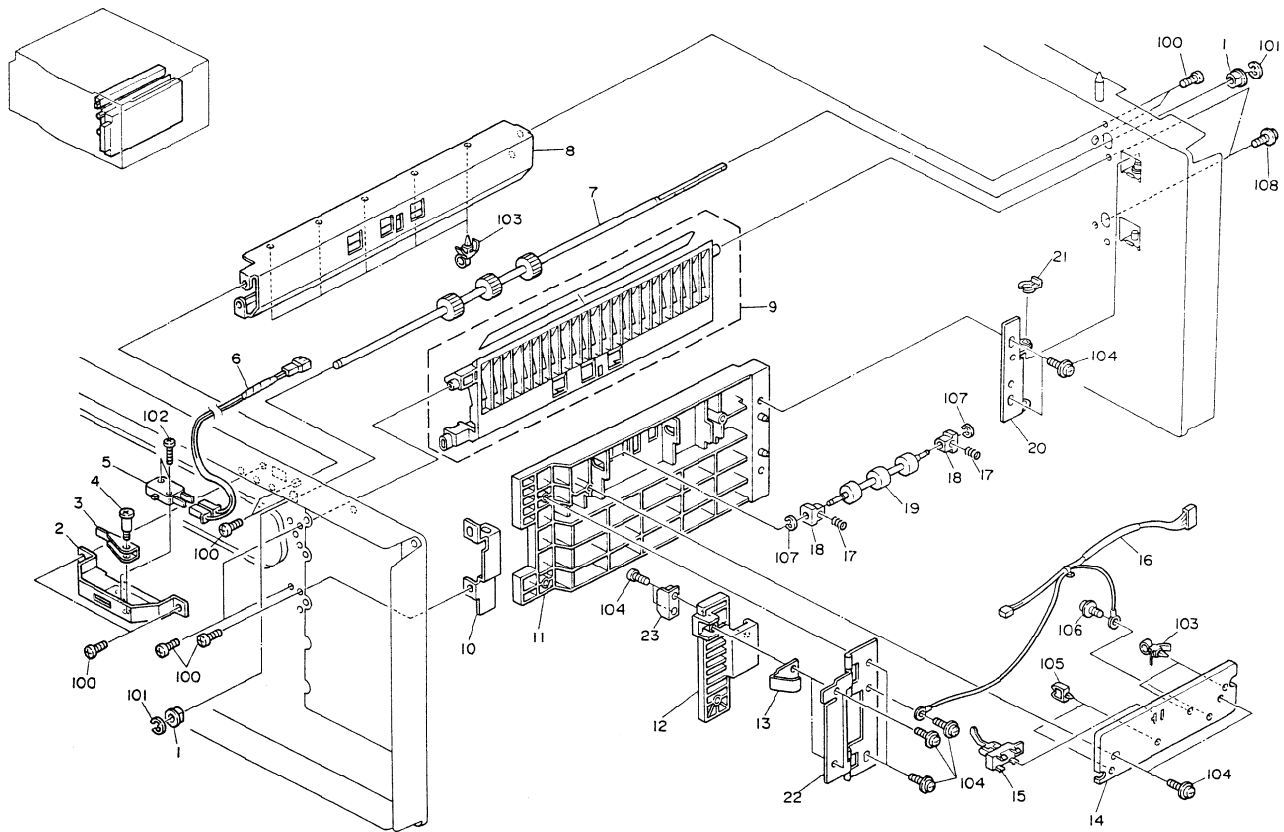
## 2. VERTICAL TRANSPORT SECTION (A326)

Index No.	Part No.	Description	Q'ty per Assembly
1	5053 0223	Bushing - 8mm	6
2	A326 1315	Switch Cover	1
3	A326 1323	Switch Cover Actuator	1
4	0801 1242	Screw - M3	1
5	1204 2136	Micro Switch	1
6	A326 5341	Door Switch Harness	1
7	AF02 0181	Drive Roller - 1st Vert Transport	1
8	A326 2850	Upper Guide - Tray Feed	1
9	AF02 0182	Drive Roller - 2nd Vert Transport	2
10	A069 2657	Center Guide - Tray Feed	1
11	A326 2855	Vertical Transport Bracket	1
12	A326 2825	Guide Plate - Vertical Transport	1
13	AG07 0004	Magnet Catch	2
14	A326 2820	Vertical Transport Lever	1
15	A326 2818	Support Leaf Spring	2
16	AG06 0034	Vertical Transport Hinge	1
17	A326 2830	Sensor Bracket	1
18	AW02 0034	Photointerruptor - 35C	3
19	A326 5330	Sensor Harness	1
20	AA06 3177	Pressure Center Spring	6
21	AA08 0034	Bushing - 4x5x7	6
22	AF02 0126	Driven Roller - Vertical Transport	3
23	A326 2826	Guide Plate Hinge	1
24	5447 2681	Snap Ring	1

Index No.	Part No.	Description	Q'ty per Assembly
100	0434 0080W	Tapping Screw - M4x8	
101	0720 0060E	Retaining Ring - M6	
102	0952 3014W	Philips Screw - M3x14	
103	1105 0199	Clamp	
104	0434 0102W	Tapping Screw - M4x10	
105	0965 4008W	Tapping Screw with Flat Washer - M4x8	
106	0965 4010W	Tapping Screw with Flat Washer - M4x10	
107	0964 4006W	Tapping Screw With Flat Washer - M4x6	
108	0720 0030E	Retaining Ring - M3	



### 3. VERTICAL TRANSPORT SECTION (A325)

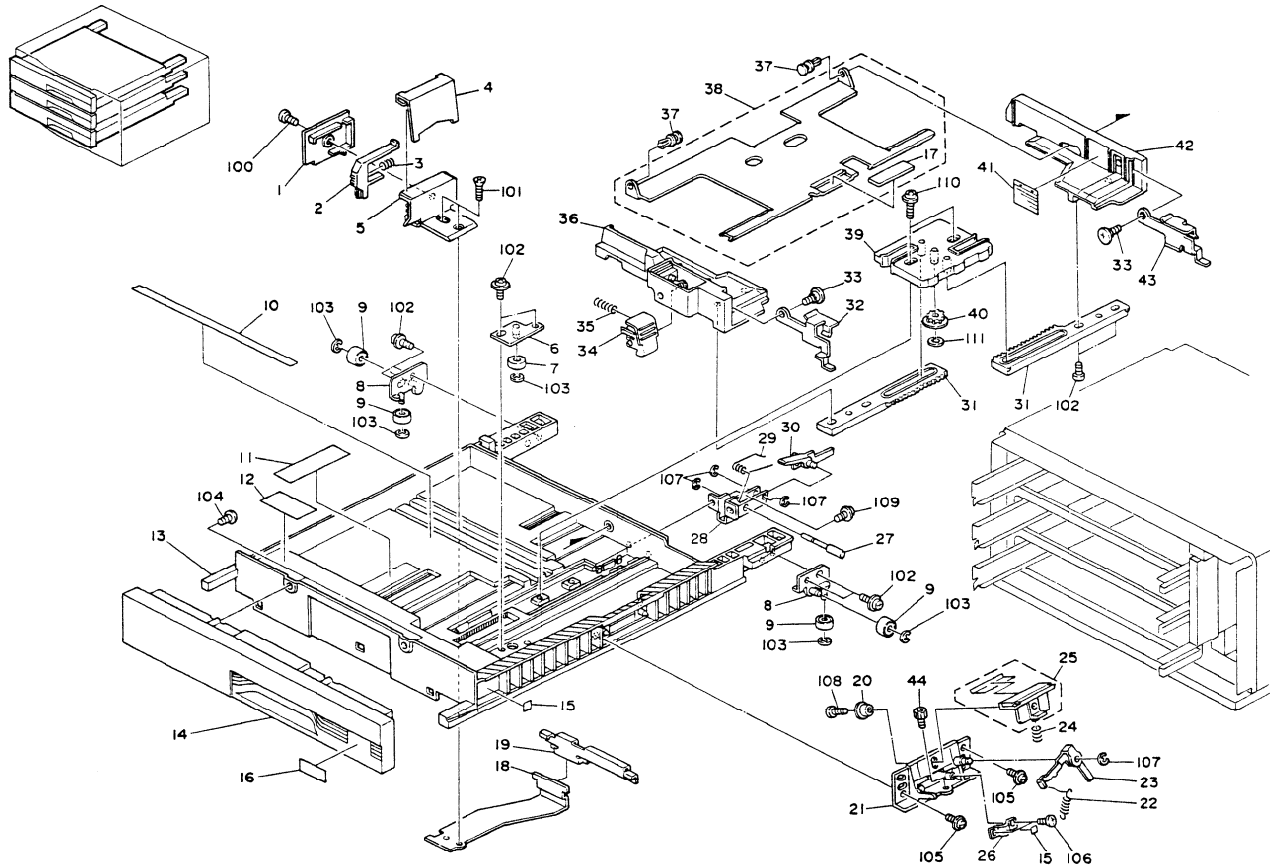


### 3. VERTICAL TRANSPORT SECTION (A325)

Index No.	Part No.	Description	Q'ty per Assembly
1	5053 0223	Bushing - 8mm	2
2	A326 1315	Switch Cover	1
3	A326 1323	Switch Cover Actuator	1
4	0801 1242	Screw - M3	1
5	1204 2136	Micro Switch	1
6	A326 5341	Door Switch Harness	1
7	AF02 0181	Drive Roller - 1st Vert Transport	1
8	A326 2850	Upper Guide - Tray Feed	1
9	A069 2657	Center Guide - Tray Feed	1
11	A326 2861	Vertical Transport Bracket	1
12	A325 2870	Relay Guide Plate	1
12	A325 2885	Vertical Transport Lever	1
13	A326 2818	Support Leaf Spring	1
14	A325 2895	Sensor Bracket	1
15	AW02 0034	Photointerruptor - 35C	1
16	A325 5330	Sensor Harness	1
17	AA06 3177	Pressure Center Spring	2
18	AA08 0034	Bushing - 4x5x7	2
19	AF02 0126	Driven Roller - Vertical Transport	1
20	A325 2890	Guide Plate Hinge	1
21	5447 2681	Snap Ring	1
22	AG06 0050	Vertical Transport Hingi	1
23	AG07 0004	Magnet Catch	1

Index No.	Part No.	Description	Q'ty per Assembly
100	0434 0080W	Tapping Screw - M4x8	
101	0720 0060E	Retaining Ring - M6	
102	0952 3014W	Philips Screw - M3x14	
103	1105 0199	Clamp	
104	0434 0102W	Tapping Screw - M4x10	
105	0965 4008W	Tapping Screw with Flat Washer - M4x8	
106	0965 4010W	Tapping Screw with Flat Washer - M4x10	
107	0964 4006W	Tapping Screw With Flat Washer - M4x6	
108	0720 0030E	Retaining Ring - M3	

#### 4. PAPER FEED TRAY (A325/A326)

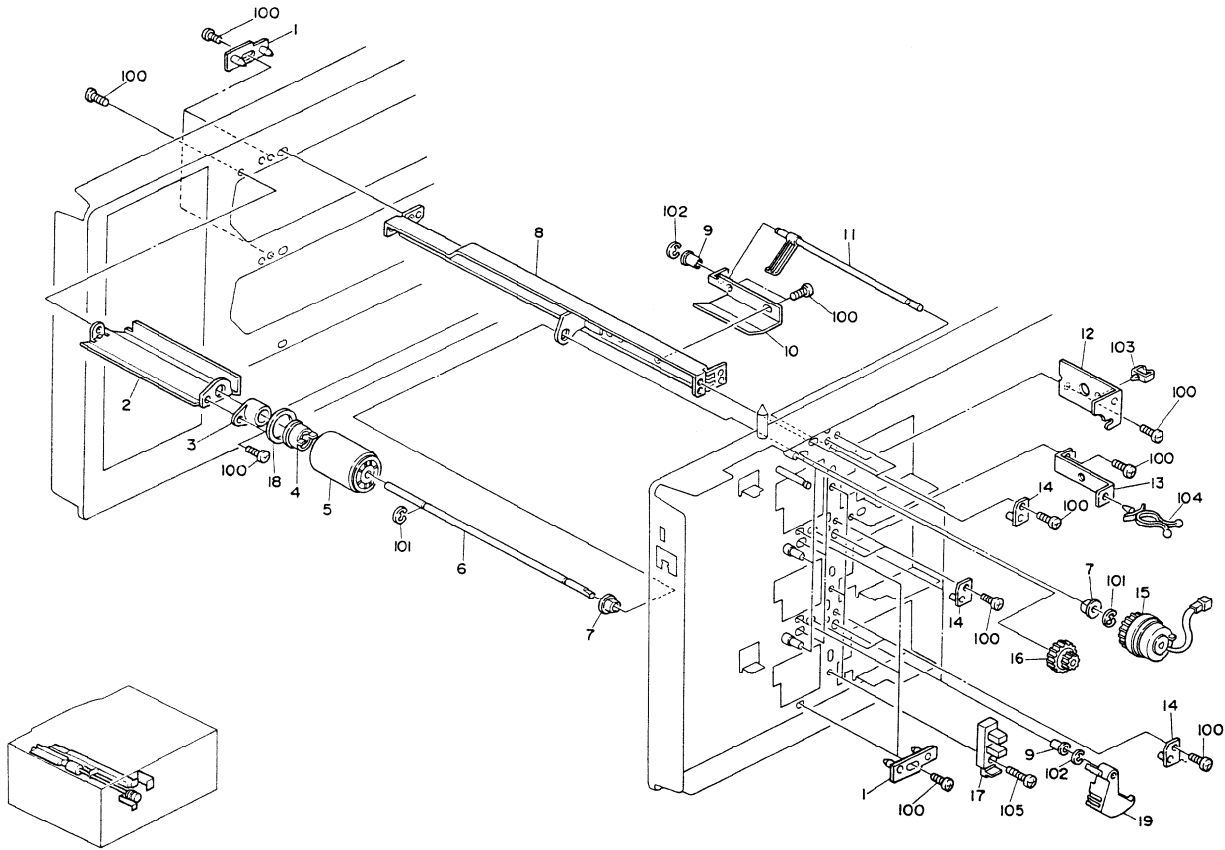


#### 4. PAPER FEED TRAY (A325/A326)

Index No.	Part No.	Description	Q'ty per Assembly
1	A069 2718	End Fence Cover	3( 1)
2	A048 2828	End Fence Stopper	3( 1)
3	AA06 3156	Spring - End Fence Stopper	3( 1)
4	A069 2719	Spring Plate - End Fence	3( 1)
5	A069 2717	End Fence	3( 1)
6	A069 2732	Tray Pressure Bracket	3( 1)
7	6754 2866	Roller - Positioning Guide	3( 1)
8	A069 2708	Tray Guide Bracket	6( 2)
9	A069 2704	Guide Roller - 6x12x7.5	12( 4)
10	AA00 2138	Decal - Paper Size - A4	3( 1)
10	AA00 2137	Decal - Paper Size - LT	3( 1)
11	AA00 2136	Decal - Paper Size - A4	3( 1)
11	AA00 2135	Decal - Paper size - LT	3( 1)
12	A073 2739	Decal - Loading Paper	3( 1)
13	AF01 0029	Paper Drawer Tray	3( 1)
14	A069 1353	Front Cover - Upper	3( 1)
15	AA00 1007	Decal - C	1( 1)
15	AA00 1008	Decal - D (A326)	1
15	AA00 1009	Decal - E (A326)	1
16	AA00 1200	Tray Decal	3( 1)
17	5215 2713	Bottom Plate Pad	3( 1)
18	A069 2721	Actuator Arm - Paper Size	3( 1)
19	A069 2720	Paper Size Actuator	3( 1)
19	A073 2583	Paper Size Actuator - LT	3( 1)
20	5442 2638	Collar - Friction Pad Arm	3( 1)
21	A069 2815	Friction Pad Bracket	3( 1)
22	AA06 0319	Release Spring	3( 1)
23	A069 2818	Release Lever - Friction Pad	3( 1)
24	AA06 3165	Pressure Spring	3( 1)
25	A069 2820	Friction Pad Ass'y	3( 1)
26	A069 2822	Cover Plate	3( 1)
27	A009 2590	Pressure Release Shaft	3( 1)
28	A069 2746	Tray Release Bracket	3( 1)
29	A009 2592	Spring - Pressure Release Lever	3( 1)
30	A009 2588	Release Lever - 3rd Cassette	3( 1)

Index No.	Part No.	Description	Q'ty per Assembly
31	A048 2835	Side Fence Gear	6( 2)
32	A069 2711	Front Paper Guide	3( 1)
33	AA14 3288	Stepped Screw	6( 2)
34	A069 2735	Side Fence Stopper	3( 1)
35	AA06 3081	Spring	3
36	A069 2714	Front Side Fence	3( 1)
37	A048 2838	Nylon Rivet	6( 2)
38	AF01 1016	Tray Bottom Plate	3( 1)
39	A069 2716	Registration Adjustment Plate	3( 1)
40	AB01 3492	Gear - 16Z	3( 1)
41	AA00 1227	Decal - Paper Level	3( 1)
42	A069 2715	Rear Side Fence	3( 1)
43	A069 2712	Rear Paper Guide	3( 1)
44	A069 2819	Adjusting Screw	3( 1)
100	0413 0082W	Tapping Screw - M3x8	
101	0323 0140W	Philips Sunk Head Screw - M3x14	
102	0965 3008W	Tapping Screw With Flat Washer - M3x8	
103	0720 0040E	Retaining Ring - M4	
104	0414 0102F	Tapping Screw - M4x10	
105	0951 3006F	Philips Screw with Frat Washer - M3x8	
106	0314 0060W	Philips Pan Head Screw - M4x6	
107	0720 0030E	Retaining Ring - M3	
108	0313 0100W	Philips Pan Head Screw - M3x10	
109	0414 0102W	Tapping Screw - M4x10	
110	0951 3008W	Philips Screw with Flat Washer - M3x8	
111	0965 4008W	Tapping Screw with Flat Washer - M4x8	
112	0805 0073	Retaining Ring - M5	

# 5. PAPER FEED SECTION (A325/A326)

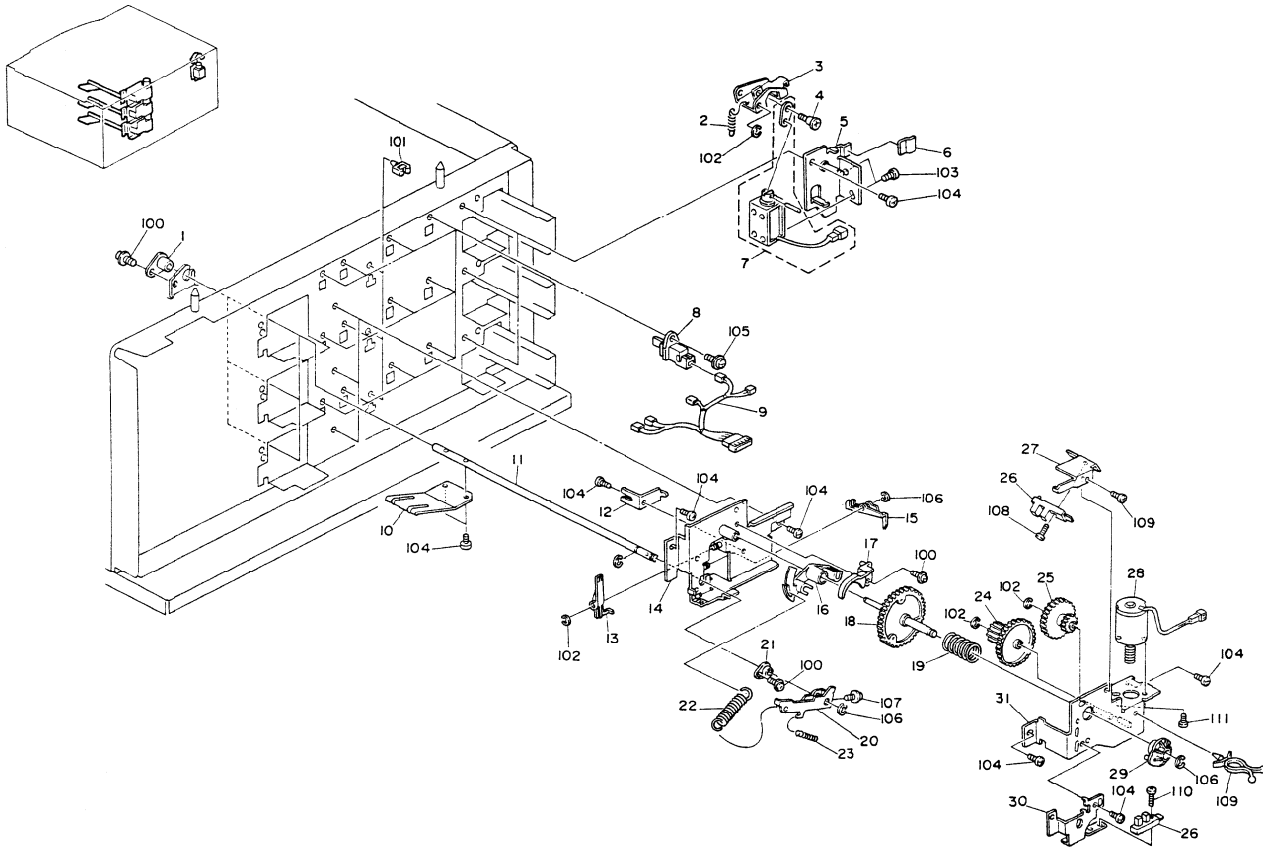


### 5. PAPER FEED SECTION (A325/A326)

Index No.	Part No.	Description	Q'ty per Assembly
1	A069 2824	Large Positioning Bracket	6( 2)
2	A069 2743	Front Guide - Tray Feed	3( 1)
3	A069 2745	Tray Feed Bushing	3( 1)
4	5215 2618	Feed Roller Hub	3( 1)
5	5215 2619	Feed Roller	3( 1)
6	AA14 0319	Feed Roller Shaft	3( 1)
7	5053 0223	Bushing - 8mm	6( 2)
8	A069 2740	Tray Feed Stay	3( 1)
9	5443 2668	Bushing	6( 1)
10	A069 2744	Rear Guide - Tray Feed	3( 1)
11	A069 2762	Paper End Feeler	3( 1)
12	A326 1135	Clutch Stopper	3( 1)
13	A326 5260	Harness Clamp Bracket	2( 1)
14	A069 2826	Small Positioning Bracket	3( 1)
15	AX20 0051	Magnetic Clutch	3( 1)
16	AB01 7120	Coupled Gear - 27/15Z	3( 1)
17	AW02 0041	Photointerruptor	3( 1)
18	A069 2829	Cushion - 11.4x19x3.2	3( 1)
19	A069 2770	Paper End Actuator	3( 1)

Index No.	Part No.	Description	Q'ty per Assembly
100	0434 0080W	Tapping Screw - M4x8	
101	0720 0060E	Retaining Ring - M6	
102	0720 0030E	Retaining Ring - M3	
103	1105 0229	Clamp	
104	1105 0206	Cable Clip - 16mm	
105	0314 0100W	Philips Pan Head Screw - M4x10	

# 6. TRAY LIFT SECTION (A325/A326)



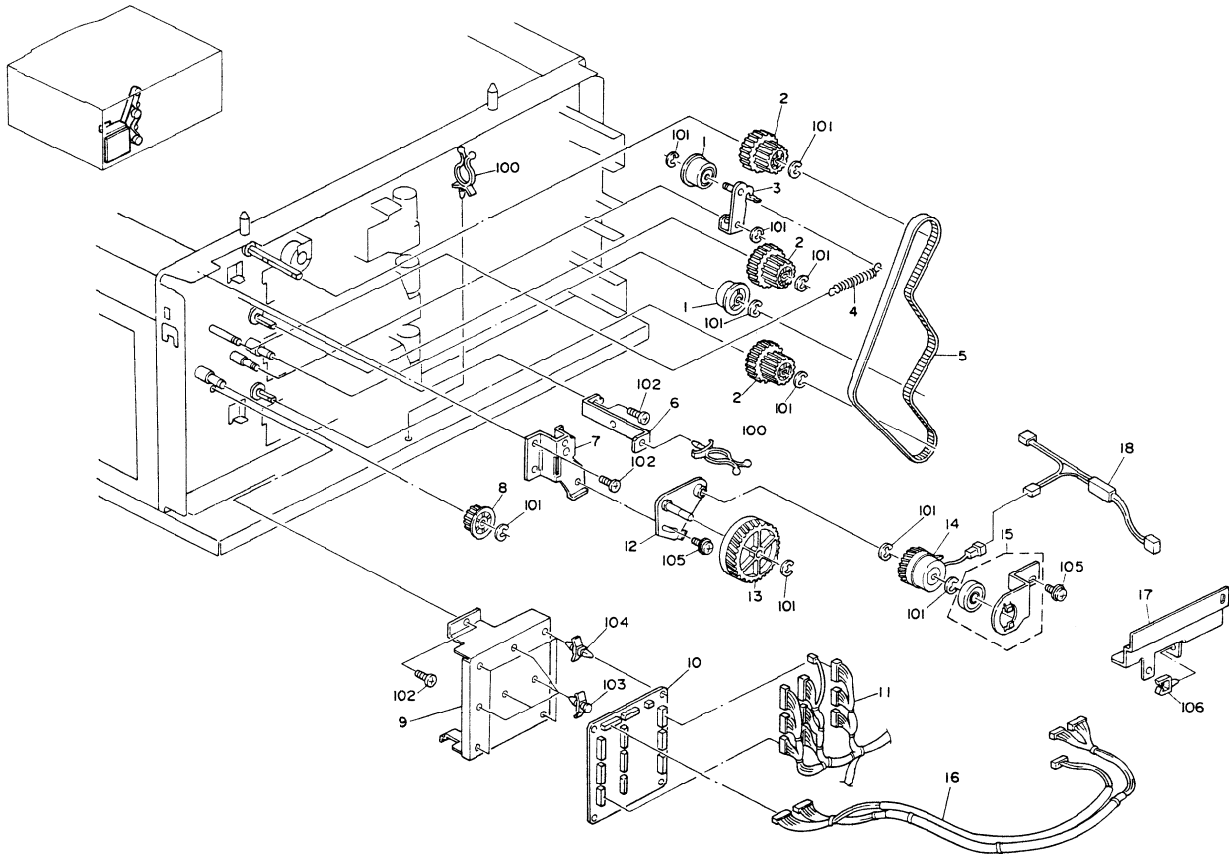
## 6. TRAY LIFT SECTION (A325/A326)

Index No.	Part No.	Description	Q'ty per Assembly
1	AE03 1005	Bushing	3( 1)
2	AA06 0436	Tray Lock Spring	3( 1)
3	A069 2837	Tray Lock Lever	3( 1)
4	AA14 3062	Shoulder Screw - M4	3( 1)
5	A326 2733	Bracket - Tray Lock Solenoid	3( 1)
6	A069 2834	Sheet Slide	1
7	A069 2773	Tray Lock Solenoid	3( 1)
8	AW50 0013	Push Switch	12( 4)
9	A326 5320	Paper Size Sensor Harness	3( 1)
10	A069 2751	Tray Pressure Arm	3( 1)
11	AA14 0339	Bottom Plate Shaft - Tray	3( 1)
12	A069 2760	Positioning Plate - Tray Release	3( 1)
13	A009 2644	Stopper Lever	3( 1)
14	A069 2755	Lift Motor Bracket	3( 1)
15	A009 2646	Release Lever	3( 1)
16	A069 2758	Tray Lift Lever	3( 1)
17	A009 2645	Lift Lever Guide	3( 1)
18	A009 2634	Gear Ass'y - 45T	3( 1)
19	5447 2812	Slide Gear Spring	3( 1)
20	A069 2750	Tray Pressure Lever	3( 1)
21	AE03 1005	Bushing	3( 1)
22	AA06 0321	Pressure Spring - Bottom Plate	3( 1)
23	AA06 0320	Release Spring	3( 1)
24	5447 2806	Gear - 15T & 40T	3( 1)
25	5447 2804	Gear - 15T	3( 1)
26	AW02 0041	Photointerruptor	6( 2)
27	A009 2647	Lift Sensor Bracket	3( 1)
28	A069 5295	Tray Lift Motor - DC 1.9W	3( 1)
29	5447 2805	Slide Pin Holder	3( 1)
30	A069 2761	Sensor Bracket - Tray Set	3( 1)
31	A009 2632	Tray Lift Bracket	3( 1)

Index No.	Part No.	Description	Q'ty per Assembly
100	0964 4008W	Tapping Screw with Flat Washer - M4x8	
101	1105 0201	Harness Clamp	
102	0720 0040E	Retaining Ring - M4	
103	0313 0040W	Philips Pan Head Screw - M3x4	
104	0434 0080W	Tapping Screw - M4x8	
105	0951 4008W	Philips Screw with Flat Washer - M4x8	
106	0720 0060E	Retaining Ring - M6	
107	0960 4012W	Philips Flange Screw - M4x12	
108	0314 0100W	Philips Pan Head Screw - M4x10	
109	1105 0206	Cable Clip - 16mm	
110	0314 0100W	Philips Pan Head Screw - M4x10	
111	0313 0050W	Philips Pan Head Screw - M3x5	



## 7. DRIVE SECTION (A325/A326)

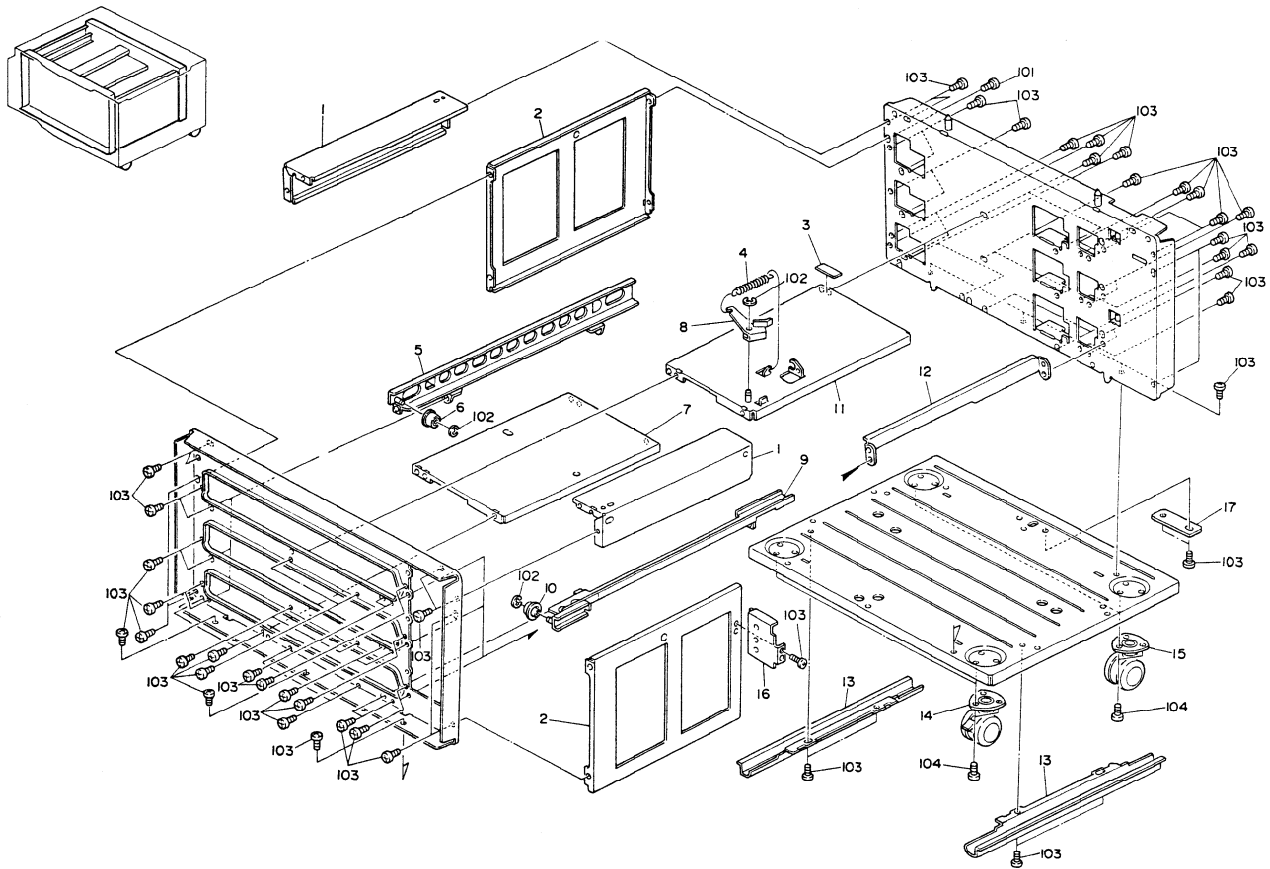


## 7. DRIVE SECTION (A325/A326)

Index No.	Part No.	Description	Q'ty per Assembly
1	AB03 0276	Tightner Pulley (A326)	2
2	AB01 7121	Coupled Gear - 30/28Z	3( 1)
3	A069 1120	Belt Tightener - Main Drive (A326)	1
4	5442 1111	Spring - Main Drive Tightener (A326)	1
5	AA04 3120	Timing Belt - 7x612 (A326)	1
6	A326 5260	Harness Clamp Bracket	1( 1)
7	A326 1125	Drive Support Bracket	1( 1)
8	AB03 0266	Pulley - 28Z (A326)	1
9	A326 5250	Bracket - Tray Control Board (A326)	1
10	A326 5100	Paper Tray Control Board (A326)	1
10	A325 5100	Paper Tray Control Board (A325)	( 1)
11	A326 5300	3 Tray Main Harness (A326)	1
11	A325 5300	Tray Main Harness (A325)	( 1)
12	A326 1120	Drive Bracket	1( 1)
13	AB01 3522	Gear - 50Z	1( 1)
14	AX20 0051	Magnetic Clutch	1( 1)
15	A326 1140	Magnetic Clutch Holder	1( 1)
16	A326 5310	Relay Harness (A326)	1
17	A326 1262	Harness Bracket	1( 1)
18	A326 5311	Clutch Relay Harness	1( 1)

Index No.	Part No.	Description	Q'ty per Assembly
100	1105 0206	Cable Clip - 16mm	1
101	0720 0060E	Retaining Ring - M6	1
102	0434 0080W	Tapping Screw - M4x8	1
103	1105 0271	Spacer	1
104	1105 0161	Clamp	1
105	0964 4008W	Tapping Screw with Flat Washer - M4x8	1
106	1105 0201	Harness Clamp	1

# 8. FRAME SECTION (A325/A326)



**8. FRAME SECTION (A325/A326)**

Index No.	Part No.	Description	Q'ty per Assembly
1	A326 1085	Upper Stay	1( 1)
2	A326 1080	Side Stay	2( 2)
3	A326 1097	Cushion - 0.8x20x60	3
4	AA06 0472	Tray Arm Spring	3
5	A069 2781	Lower Left Tray Rail	3( 1)
6	A069 2799	Guide Roller - 7.5mm	3( 1)
7	A326 1096	Side Plate Stay - Lower Left (A326)	1
8	A069 2759	Tray Guide Arm	3
9	A069 2791	Lower Right Tray Rail	3( 1)
10	A069 2704	Guide Roller - 6x12x7.5	3( 1)
11	A326 1090	Side Plate Stay (A326)	3
11	A325 1096	Tray Lower Cover	( 1)
12	A069 2789	Upper Tray Rail	3( 3)
13	A326 1058	Base Grip	2( 2)
14	AH01 2004	Caster With Stopper	2( 2)
15	AH01 2005	Caster Without Stopper	2( 2)
16	A326 1065	Harness Cover	1( 1)
17	A326 1059	Base Cover	1( 1)

Index No.	Part No.	Description	Q'ty per Assembly
100	1105 0199	Clamp	
101	0434 0060W	Tapping Screw - M4x6	
102	0720 0040E	Retaining Ring - M4	
103	0434 0080W	Tapping Screw - M4x8	
104	0435 0100W	Tapping Screw - M5x10	

## 9. INTERFACE BOARD (A325/A326)

### CAPACITOR

SYMBOL NO.	INDEX NO.
C101	114
C102	113

### CONNECTOR

SYMBOL NO.	INDEX NO.
CN 1	107
CN 2	106
CN 3	105
CN 4	104
CN 5	103
CN 6	101
CN 7	105
CN 8	102
CN 9	103
CN10	105

SYMBOL NO.	INDEX NO.
CN11	102
CN12	103

### DIODE

SYMBOL NO.	INDEX NO.
D101	109
D102	109
D103	109
D104	109
D105	109
D106	109
D107	109
D108	109
D109	109
D110	109

SYMBOL NO.	INDEX NO.
D111	109
D112	109
D113	109
D114	109
D115	109
D116	109
D117	109
D118	109
D119	109
D120	109

SYMBOL NO.	INDEX NO.
D121	109
D122	109
D123	109
D124	109
D125	109
D126	109

### IC

SYMBOL NO.	INDEX NO.
IC101	110
IC102	108
IC103	108
IC104	111
IC105	111

### RERAY

SYMBOL NO.	INDEX NO.
RAY101	112

### RESISTOR

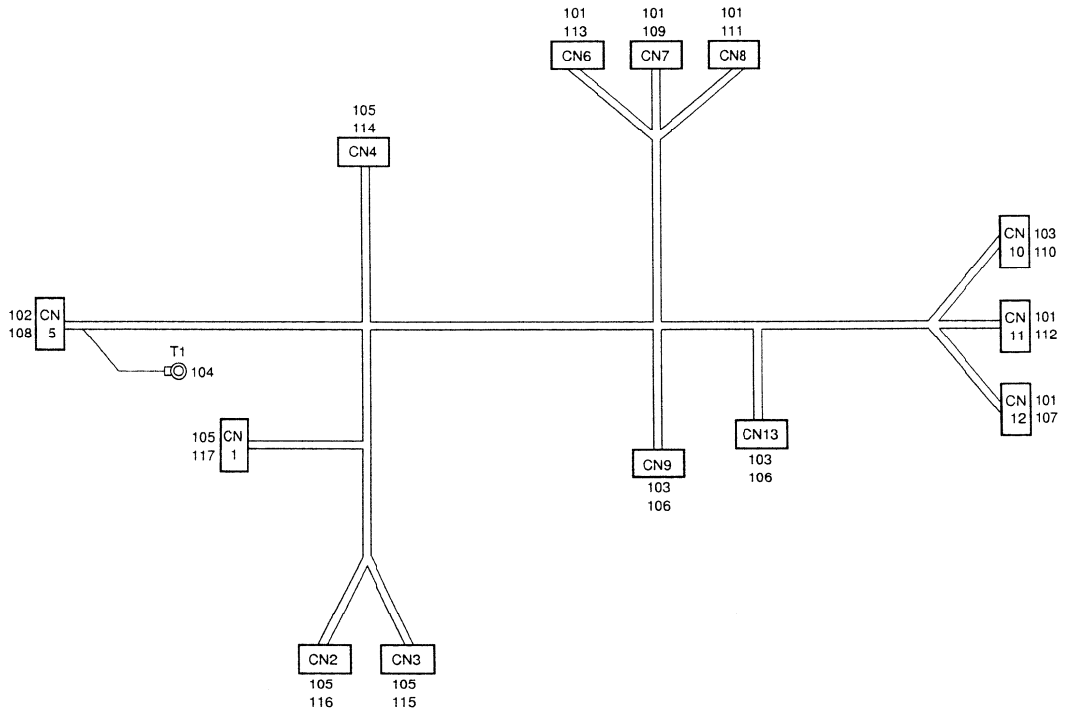
SYMBOL NO.	INDEX NO.
R101	115
R102	115
R103	115
R104	115
R105	115
R106	115

### 9. INTERFACE BOARD (A325/A326)

Index No.	Part No.	Description	Q'ty per Assembly
*	A326 5100	Paper Tray Control Board (A326)	1
*	A325 5100	Paper Tray Control Board (A325)	( 1 )

Index No.	Part No.	Description	Q'ty per Assembly
101	1102 5274	Connector - 2P	
102	1102 5279	Connector - 7P (A326)	
103	1102 5280	Connector - 8P	
104	1102 5281	Connector - 9P	
105	1102 5283	Connector - 11P	
106	1102 5388	Connector - 8P	
107	1102 5389	Connector - 11P	
108	1401 0271	IC - TD62064P	
109	1401 0822	Diode - 1SS137	
110	1407 3809	IC - M66310P (A326)	
111	1408 0919	IC - MB3863PSZ - G	
112	1601 7634	Resistor Array - 220 $\Omega$ 1/8W $\pm$ 5%	
113	1606 1332	Capacitor - 1000pF 50V	
114	1606 1336	Capacitor - 10000pF -20% +80% 50V	
115	1611 4102	Resistor - 1K $\Omega$ 1/4T $\pm$ 5%	
116	1407 3685	IC - M66312P (A325)	

# 10. MAIN HARNESS (A325)



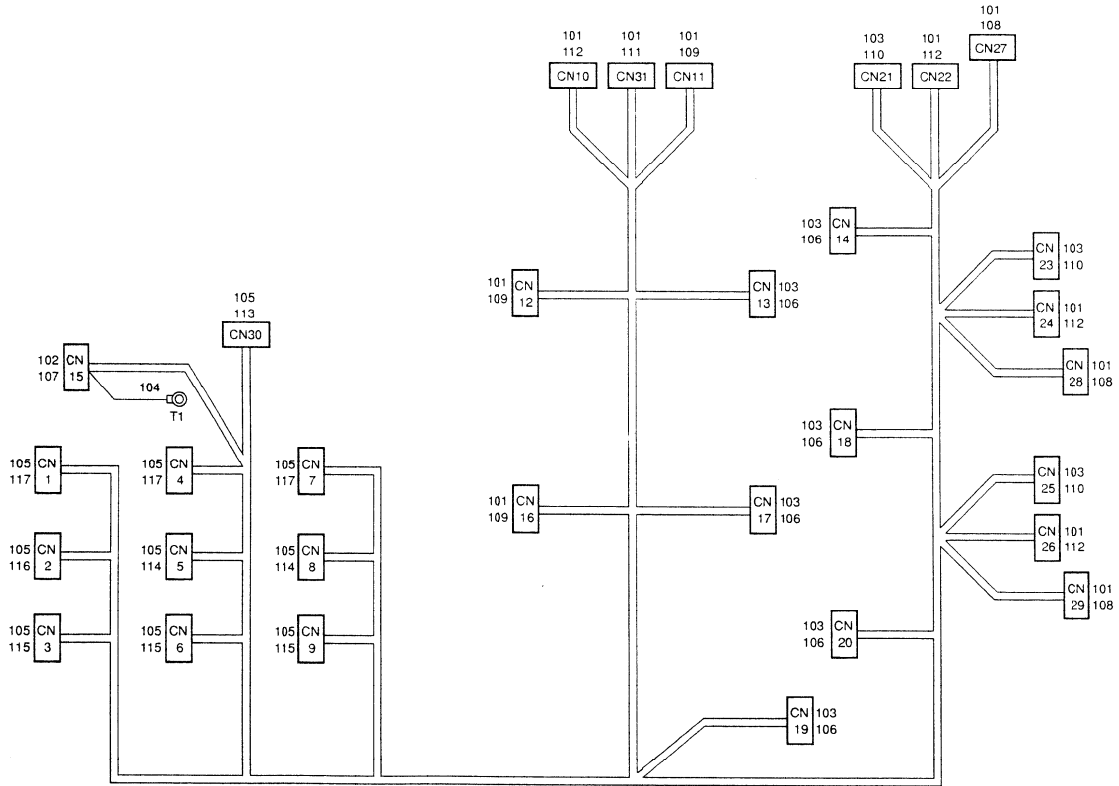
**10. MAIN HARNESS (A325)**

Index No.	Part No.	Description	Q'ty per Assembly
*	A325 5300	Tray Main Harness	1

Index No.	Part No.	Description	Q'ty per Assembly
101	1100 1204	Socket - Mate-N-Lock	
102	1100 1205	Terminal	
103	1100 1249	Receptacle Terminal	
104	1100 1264	Wire Terminal	
105	1100 1322	Contact	
106	1102 1620	Connector - 3P	
107	1102 1629	Connector - 10P	
108	1102 1633	Connector - 4P	
109	1102 1692	Connector - 2P	
110	1102 1786	Connector - 3P	
111	1102 1841	Connector - 2P	
112	1102 5272	Connector - 2P	
113	1102 5273	Connector - 2P	
114	1102 5284	Connector - 2P	
115	1102 5290	Connector - 8P	
116	1102 5291	Connector - 9P	
117	1102 5293	Connector - 11P	



# 11. MAIN HARENSS (A326)





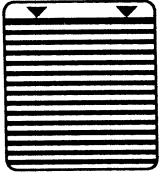


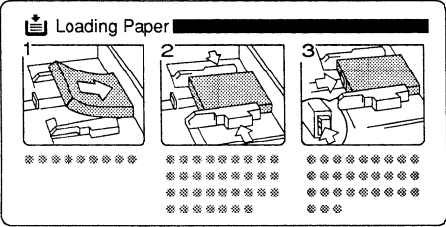
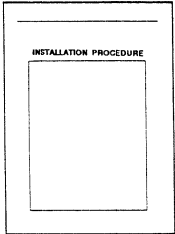
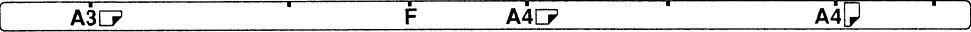
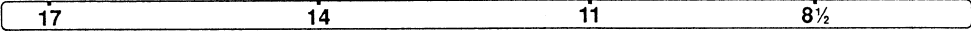


**11. MAIN HARENSS (A326)**

Index No.	Part No.	Description	Q'ty per Assembly
*	A326 5300	3 Tray Main Harness	1

Index No.	Part No.	Description	Q'ty per Assembly
101	1100 1204	Socket - Mate-N-Lock	
102	1100 1205	Terminal	
103	1100 1249	Receptacle Terminal	
104	1100 1264	Wire Terminal	
105	1100 1322	Contact	
106	1102 1620	Connector - 3P	
107	1102 1627	Connector - 3P	
108	1102 1629	Connector - 10P	
109	1102 1692	Connector - 2P	
110	1102 1786	Connector - 3P	
111	1102 1841	Connector - 2P	
112	1102 5272	Connector - 2P	
113	1102 5284	Connector - 2P	
114	1102 5289	Connector - 7P	
115	1102 5290	Connector - 8P	
116	1102 5291	Connector - 9P	
117	1102 5293	Connector - 11P	

12. DECAL AND DOCUMENT (A325/A326)

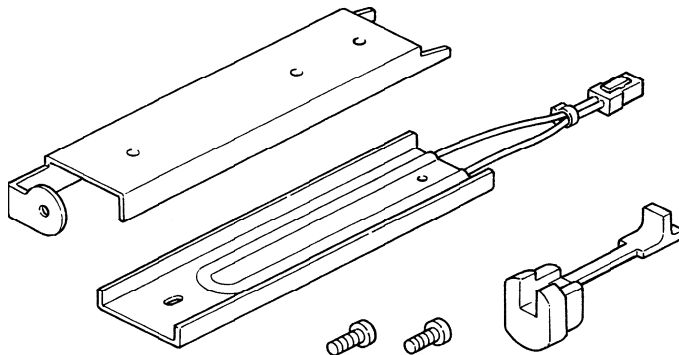
<p>1</p> <p><b>C</b></p>	<p>2</p> <p><b>D</b></p>	<p>3</p> <p><b>E</b></p>	<p>4</p> <p>2 </p> <p>3 </p> <p>4 </p> <p>5 </p>	<p>5</p> 
<p>6</p>  	<p>8</p> 	<p>9</p> 		
<p>7</p>  				

## 12. DECAL AND DOCUMENT (A325/A326)

Index No.	Part No.	Description	Q'ty per Assembly
*	A326 8525	Decal Sheet - Multi Language	1
1	AA00 1007	Decal - C	1
2	AA00 1008	Decal - D	1
3	AA00 1009	Decal - E	1
4	AA00 1200	Tray Decal	1
5	AA00 1227	Decal - Paper Level	1
6	AA00 2135	Decal - Paper Size - LT	1
6	AA00 2136	Decal - Paper Size - A4	1
7	AA00 2137	Decal - Paper Size - LT	1
7	AA00 2138	Decal - Paper Size - A4	1
8	A073 2739	Decal - Loading Paper	1
9	A326 8615	Installation Procedure-5 Languages	1
9	A326 8610	Installation Procedure - English	1

Index No.	Part No.	Description	Q'ty per Assembly

13. SPECIAL TOOL (A325/A326)



**13. SPECIAL TOOL (A325/A326)**

Index No.	Part No.	Description	Q'ty per Assembly
1	A069 9500	Tray Heater Kit - 115V	1
1	A069 9501	Tray Heater Kit - 230V	1

Index No.	Part No.	Description	Q'ty per Assembly
-----------	----------	-------------	-------------------

# **PARTS INDEX**

Part No.	Description	Paper and Index No.
A325 1096	Tray Lower Cover	19- 11
A325 1280	Left Base Bracket (A325)	5- 25
A325 1283	Right Base Bracket (A325)	5- 24
A325 1285	Left Cover Bracket (A325)	5- 31
A325 1286	Right Cover Bracket (A325)	5- 30
A325 1292	Lower Door Cover (A325)	5- 28
A325 1293	Door Catch Bracket (A325)	5- 26
A325 1294	Bracket Cover (A325)	5- 27
A325 1295	Door Catch Bracket (A325)	5- 29
A325 1296	Lower Cover Stopper (A325)	5- 23
A325 2870	Relay Guide Plate	9- 12
A325 2885	Vertical Transport Lever	9- 12
A325 2890	Guide Plate Hinge	9- 20
A325 2895	Sensor Bracket	9- 14
A325 5100	Paper Tray Control Board (A325)	17- 10
A325 5100	Paper Tray Control Board (A325)	21- *
A325 5300	Tray Main Harness (A325)	17- 11
A325 5300	Tray Main Harness	23- *
A325 5330	Sensor Harness	9- 16
A326 1056	Lower Cover Bracket (A326)	5- 22
A326 1058	Base Grip	19- 13
A326 1059	Base Cover	19- 17
A326 1065	Harness Cover	19- 16
A326 1080	Side Stay	19- 2
A326 1085	Upper Stay	19- 1
A326 1090	Side Plate Stay (A326)	19- 11
A326 1096	Side Plate Stay - Lower Left (A326)	19- 7
A326 1097	Cushion - 0.8x20x60	19- 3
A326 1098	Fixing Plate	5- 6
A326 1120	Drive Bracket	17- 12
A326 1125	Drive Support Bracket	17- 7
A326 1135	Clutch Stopper	13- 12
A326 1140	Magnetic Clutch Holder	17- 15
A326 1260	Front Door	5- 19
A326 1261	Door Switch Actuator	5- 18

Part No.	Description	Paper and Index No.
A326 1262	Harness Bracket	17- 17
A326 1270	Left Cover	5- 1
A326 1275	Right Cover	5- 16
A326 1277	Cover Bracket	5- 2
A326 1280	Upper Exterior Plate	5- 7
A326 1281	Exterior Plate Bracket	5- 4
A326 1285	Lower Exterior Plate (A326)	5- 20
A326 1300	Rear Cover	5- 10
A326 1302	Rear Cover Bracket	5- 8
A326 1303	Right Bracket - Rear Cover	5- 13
A326 1310	Upper Rear Cover	5- 9
A326 1311	Upper Right Cover	5- 15
A326 1315	Switch Cover	7- 2
A326 1315	Switch Cover	9- 2
A326 1323	Switch Cover Actuator	7- 3
A326 1323	Switch Cover Actuator	9- 3
A326 1325	Heater Cover	5- 11
A326 2733	Bracket - Tray Lock Solenoid	15- 5
A326 2818	Support Leaf Spring	7- 15
A326 2818	Support Leaf Spring	9- 13
A326 2820	Vertical Transport Lever	7- 14
A326 2825	Guide Plate - Vertical Transport	7- 12
A326 2826	Guide Plate Hinge	7- 23
A326 2830	Sensor Bracket	7- 17
A326 2850	Upper Guide - Tray Feed	7- 8
A326 2850	Upper Guide - Tray Feed	9- 8
A326 2855	Vertical Transport Bracket	7- 11
A326 2861	Vertical Transport Bracket	9- 11
A326 2870	Relay Guide Plate	5- 14
A326 5100	Paper Tray Control Board (A326)	17- 10
A326 5100	Paper Tray Control Board (A326)	21- *
A326 5250	Bracket - Tray Control Board (A326)	17- 9
A326 5260	Harness Clamp Bracket	13- 13
A326 5260	Harness Clamp Bracket	17- 6
A326 5300	3 Tray Main Harness (A326)	17- 11



Part No.	Description	Paper and Index No.
A326 5300	3 Tray Main Harness	25- *
A326 5310	Relay Harness (A326)	17- 16
A326 5311	Clutch Relay Harness	17- 18
A326 5320	Paper Size Sensor Harness	15- 9
A326 5330	Sensor Harness	7- 19
A326 5341	Door Switch Harness	7- 6
A326 5341	Door Switch Harness	9- 6
A326 8525	Decal Sheet - Multi Language	27- *
A326 8610	Installation Procedure - English	27- 9
A326 8615	Installation Procedure-5 Languages	27- 9

Part No.	Description	Paper and Index No.
AA00 1007	Decal - C	11- 15
AA00 1007	Decal - C	27- 1
AA00 1008	Decal - D (A326)	11- 15
AA00 1008	Decal - D	27- 2
AA00 1009	Decal - E (A326)	11- 15
AA00 1009	Decal - E	27- 3
AA00 1200	Tray Decal	11- 16
AA00 1200	Tray Decal	27- 4
AA00 1227	Decal - Paper Level	11- 41
AA00 1227	Decal - Paper Level	27- 5
AA00 2135	Decal - Paper size - LT	11- 11
AA00 2135	Decal - Paper Size - LT	27- 6
AA00 2136	Decal - Paper Size - A4	11- 11
AA00 2136	Decal - Paper Size - A4	27- 6
AA00 2137	Decal - Paper Size - LT	11- 10
AA00 2137	Decal - Paper Size - LT	27- 7
AA00 2138	Decal - Paper Size - A4	11- 10
AA00 2138	Decal - Paper Size - A4	27- 7
AA04 3120	Timing Belt - 7x612 (A326)	17- 5
AA06 0319	Release Spring	11- 22
AA06 0320	Release Spring	15- 23
AA06 0321	Pressure Spring - Bottom Plate	15- 22
AA06 0436	Tray Lock Spring	15- 2
AA06 0472	Tray Arm Spring	19- 4
AA06 3081	Spring	11- 35
AA06 3156	Spring - End Fence Stopper	11- 3
AA06 3165	Pressure Spring	11- 24
AA06 3177	Pressure Center Spring	7- 20
AA06 3177	Pressure Center Spring	9- 17
AA08 0034	Bushing - 4x5x7	7- 21
AA08 0034	Bushing - 4x5x7	9- 18
AA14 0319	Feed Roller Shaft	13- 6
AA14 0339	Bottom Plate Shaft - Tray	15- 11
AA14 3062	Shoulder Screw - M4	15- 4
AA14 3288	Stepped Screw	11- 33

Part No.	Description	Paper and Index No.
AB01 3492	Gear - 16Z	11- 40
AB01 3522	Gear - 50Z	17- 13
AB01 7120	Coupled Gear - 27/15Z	13- 16
AB01 7121	Coupled Gear - 30/28Z	17- 2
AB03 0266	Pulley - 28Z (A326)	17- 8
AB03 0276	Tightner Pulley (A326)	17- 1
AE03 1005	Bushing	15- 1
AE03 1005	Bushing	15-21
AF01 0029	Paper Drawer Tray	11- 13
AF01 1016	Tray Bottom Plate	11-38
AF02 0126	Driven Roller - Vertical Transport	7- 22
AF02 0126	Driven Roller - Vertical Transport	9- 19
AF02 0181	Drive Roller - 1st Vert Transport	7- 7
AF02 0181	Drive Roller - 1st Vert Transport	9- 7
AF02 0182	Drive Roller - 2nd Vert Transport	7- 9
AG06 0034	Vertical Transport Hinge	7- 16
AG06 0038	Front Door Hinge	5- 17
AG06 0050	Vertical Transport Hingi	9-22
AG07 0004	Magnet Catch	5- 5
AG07 0004	Magnet Catch	7- 13
AG07 0004	Magnet Catch	9-23
AH01 2004	Caster With Stopper	19- 14
AH01 2005	Caster Without Stopper	19- 15
AW02 0034	Photointerruptor - 35C	7- 18
AW02 0034	Photointerruptor - 35C	9- 15
AW02 0041	Photointerruptor	13- 17
AW02 0041	Photointerruptor	15- 26
AW50 0013	Push Switch	15- 8
AX20 0051	Magnetic Clutch	13- 15
AX20 0051	Magnetic Clutch	17- 14
A009 2588	Release Lever - 3rd Cassette	11- 30
A009 2590	Pressure Release Shaft	11- 27
A009 2592	Spring - Pressure Release Lever	11- 29
A009 2632	Tray Lift Bracket	15- 31
A009 2634	Gear Ass'y - 45T	15- 18

Part No.	Description	Paper and Index No.
A009 2644	Stopper Lever	15- 13
A009 2645	Lift Lever Guide	15- 17
A009 2646	Release Lever	15- 15
A009 2647	Lift Sensor Bracket	15- 27
A048 2828	End Fence Stopper	11- 2
A048 2835	Side Fence Gear	11- 31
A048 2838	Nylon Rivet	11- 37
A069 1120	Belt Tightener - Main Drive (A326)	17- 3
A069 1353	Front Cover - Upper	11- 14
A069 2657	Center Guide - Tray Feed	7- 10
A069 2657	Center Guide - Tray Feed	9- 9
A069 2704	Guide Roller - 6x12x7.5	11- 9
A069 2704	Guide Roller - 6x12x7.5	19- 10
A069 2708	Tray Guide Bracket	11- 8
A069 2711	Front Paper Guide	11- 32
A069 2712	Rear Paper Guide	11- 43
A069 2714	Front Side Fence	11- 36
A069 2715	Rear Side Fence	11- 42
A069 2716	Registration Adjustment Plate	11- 39
A069 2717	End Fence	11- 5
A069 2718	End Fence Cover	11- 1
A069 2719	Spring Plate - End Fence	11- 4
A069 2720	Paper Size Actuator	11- 19
A069 2721	Actuator Arm - Paper Size	11- 18
A069 2732	Tray Pressure Bracket	11- 6
A069 2735	Side Fence Stopper	11- 34
A069 2740	Tray Feed Stay	13- 8
A069 2743	Front Guide - Tray Feed	13- 2
A069 2744	Rear Guide - Tray Feed	13- 10
A069 2745	Tray Feed Bushing	13- 3
A069 2746	Tray Release Bracket	11- 28
A069 2750	Tray Pressure Lever	15- 20
A069 2751	Tray Pressure Arm	15- 10
A069 2755	Lift Motor Bracket	15- 14
A069 2758	Tray Lift Lever	15- 16

Part No.	Description	Paper and Index No.
A069 2759	Tray Guide Arm	19- 8
A069 2760	Positioning Plate - Tray Release	15- 12
A069 2761	Sensor Bracket - Tray Set	15- 30
A069 2762	Paper End Feeler	13- 11
A069 2770	Paper End Actuator	13- 19
A069 2773	Tray Lock Solenoid	15- 7
A069 2781	Lower Left Tray Rail	19- 5
A069 2786	Left Stopper - Paper Tray	5- 3
A069 2789	Upper Tray Rail	19- 12
A069 2791	Lower Right Tray Rail	19- 9
A069 2796	Right Stopper - Paper Tray	5- 21
A069 2799	Guide Roller - 7.5mm	19- 6
A069 2815	Friction Pad Bracket	11- 21
A069 2818	Release Lever - Friction Pad	11- 23
A069 2819	Adjusting Screw	11- 44
A069 2820	Friction Pad Ass'y	11- 25
A069 2822	Cover Plate	11- 26
A069 2824	Large Positioning Bracket	13- 1
A069 2826	Small Positioning Bracket	13- 14
A069 2829	Cushion - 11.4x19x3.2	13- 18
A069 2834	Sheet Slide	15- 6
A069 2837	Tray Lock Lever	15- 3
A069 5295	Tray Lift Motor - DC 1.9W	15- 28
A069 9500	Tray Heater Kit - 115V	29- 1
A069 9501	Tray Heater Kit - 230V	29- 1
A073 2583	Paper Size Actuator - LT	11- 19
A073 2739	Decal - Loading Paper	11- 12
A073 2739	Decal - Loading Paper	27- 8
A499 1378	Stepped Screw - M4x6	5- 12
5053 0223	Bushing - 8mm	7- 1
5053 0223	Bushing - 8mm	9- 1
5053 0223	Bushing - 8mm	13- 7
5215 2618	Feed Roller Hub	13- 4
5215 2619	Feed Roller	13- 5
5215 2713	Bottom Plate Pad	11- 17

Part No.	Description	Paper and Index No.
5442 1111	Spring - Main Drive Tightener (A326)	17- 4
5442 2638	Collar - Friction Pad Arm	11- 20
5443 2668	Bushing	13- 9
5447 2681	Snap Ring (A325)	5- 32
5447 2681	Snap Ring	7- 24
5447 2681	Snap Ring	9- 21
5447 2804	Gear - 15T	15- 25
5447 2805	Slide Pin Holder	15- 29
5447 2806	Gear - 15T & 40T	15- 24
5447 2812	Slide Gear Spring	15- 19
6754 2866	Roller - Positioning Guide	11- 7

Part No.	Description	Paper and Index No.
0313 0040W	Philips Pan Head Screw - M3x4	15-103
0313 0050W	Philips Pan Head Screw - M3x5	15-111
0313 0100W	Philips Pan Head Screw - M3x10	11-108
0314 0060W	Philips Pan Head Screw - M4x6	11-106
0314 0080W	Philips Pan Head Screw - M4x8	5-108
0314 0100W	Philips Pan Head Screw - M4x10	13-105
0314 0100W	Philips Pan Head Screw - M4x10	15-108
0314 0100W	Philips Pan Head Screw - M4x10	15-110
0323 0140W	Philips Sunk Head Screw - M3x14	11-101
0413 0060F	Philips Truss Head Screw - M3 x 6	5-102
0413 0082W	Tapping Screw - M3x8	11-100
0414 0102F	Tapping Screw - M4x10	11-104
0414 0102W	Tapping Screw - M4x10	11-109
0434 0060W	Tapping Screw - M4x6	19-101
0434 0080W	Tapping Screw - M4x8	5-101
0434 0080W	Tapping Screw - M4x8	7-100
0434 0080W	Tapping Screw - M4x8	9-100
0434 0080W	Tapping Screw - M4x8	13-100
0434 0080W	Tapping Screw - M4x8	15-104
0434 0080W	Tapping Screw - M4x8	17-102
0434 0080W	Tapping Screw - M4x8	19-103
0434 0102W	Tapping Screw - M4x10	7-104
0434 0102W	Tapping Screw - M4x10	9-104
0435 0100W	Tapping Screw - M5x10	19-104
0720 0030E	Retaining Ring - M3	7-108
0720 0030E	Retaining Ring - M3	9-108
0720 0030E	Retaining Ring - M3	11-107
0720 0030E	Retaining Ring - M3	13-102
0720 0040E	Retaining Ring - M4	11-103
0720 0040E	Retaining Ring - M4	15-102
0720 0040E	Retaining Ring - M4	19-102
0720 0060E	Retaining Ring - M6	7-101
0720 0060E	Retaining Ring - M6	9-101
0720 0060E	Retaining Ring - M6	13-101
0720 0060E	Retaining Ring - M6	15-106

Part No.	Description	Paper and Index No.
0720 0060E	Retaining Ring - M6	17-101
0801 1242	Screw - M3	7- 4
0801 1242	Screw - M3	9- 4
0802 5094	Tapping Truss Head Screw - M4x8	5-100
0804 9004	Push Nut - M4	5-106
0805 0073	Retaining Ring - M5	11-112
0950 4008M	Screw - M4x8	5-109
0951 3006F	Contact	11-105
0951 3008W	Philips Screw with Flat Washer - M3x8	11-110
0951 4008W	Philips Screw with Flat Washer - M4x8	15-105
0952 3014W	Philips Screw - M3x14	7-102
0952 3014W	Philips Screw - M3x14	9-102
0960 4012W	Philips Flange Screw - M4x12	15-107
0964 4006W	Tapping Screw With Flat Washer - M4x6	7-107
0964 4006W	Tapping Screw With Flat Washer - M4x6	9-107
0964 4008W	Tapping Screw with Flat Washer - M4x8	5-103
0964 4008W	Tapping Screw with Flat Washer - M4x8	15-100
0964 4008W	Tapping Screw with Flat Washer - M4x8	17-105
0965 3008W	Tapping ScrewWith Flat Washer - M3x8	11-102
0965 4008W	Tapping Screw with Flat Washer - M4x8	5-107
0965 4008W	Tapping Screw with Flat Washer - M4x8	7-105
0965 4008W	Tapping Screw with Flat Washer - M4x8	9-105
0965 4008W	Tapping Screw with Flat Washer - M4x8	11-111
0965 4010W	Tapping Screw with Flat Washer - M4x10	5-104
0965 4010W	Tapping Screw with Flat Washer - M4x10	7-106
0965 4010W	Tapping Screw with Flat Washer - M4x10	9-106
0965 4012W	Philips Pan Head Screw - M4x12	5-105
1100 1204	Socket - Mate-N-Lock	23-101
1100 1204	Socket - Mate-N-Lock	25-101
1100 1205	Terminal	23-102
1100 1205	Terminal	25-102
1100 1249	Receptacle Terminal	23-103
1100 1249	Receptacle Terminal	25-103
1100 1264	Wire Terminal	23-104
1100 1264	Wire Terminal	25-104

Part No.	Description	Paper and Index No.
1100 1322	Contact	23-105
1100 1322	Contact	25-105
1102 1620	Connector - 3P	23-106
1102 1620	Connector - 3P	25-106
1102 1627	Connector - 3P	25-107
1102 1629	Connector - 10P	23-107
1102 1629	Connector - 10P	25-108
1102 1633	Connector - 4P	23-108
1102 1692	Connector - 2P	23-109
1102 1692	Connector - 2P	25-109
1102 1786	Connector - 3P	23-110
1102 1786	Connector - 3P	25-110
1102 1841	Connector - 2P	23-111
1102 1841	Connector - 2P	25-111
1102 5272	Connector - 2P	23-112
1102 5272	Connector - 2P	25-112
1102 5273	Connector - 2P	23-113
1102 5274	Connector - 2P	21-101
1102 5279	Connector - 7P (A326)	21-102
1102 5280	Connector - 8P	21-103
1102 5281	Connector - 9P	21-104
1102 5283	Connector - 11P	21-105
1102 5284	Connector - 2P	23-114
1102 5284	Connector - 2P	25-113
1102 5289	Connector - 7P	25-114
1102 5290	Connector - 8P	23-115
1102 5290	Connector - 8P	25-115
1102 5291	Connector - 9P	23-116
1102 5291	Connector - 9P	25-116
1102 5293	Connector - 11P	23-117
1102 5293	Connector - 11P	25-117
1102 5388	Connector - 8P	21-106
1102 5389	Connector - 11P	21-107
1105 0161	Clamp	17-104
1105 0199	Clamp	7-103

Part No.	Description	Paper and Index No.
1105 0199	Clamp	9-103
1105 0199	Clamp	19-100
1105 0201	Harness Clamp	15-101
1105 0201	Harness Clamp	17-106
1105 0206	Cable Clip - 16mm	13-104
1105 0206	Cable Clip - 16mm	15-109
1105 0206	Cable Clip - 16mm	17-100
1105 0229	Clamp	13-103
1105 0271	Spacer	17-103
1204 2136	Micro Switch	7- 5
1204 2136	Micro Switch	9- 5
1401 0271	IC - TD62064P	21-108
1401 0822	Diode - 1SS137	21-109
1407 3685	IC - M66312P (A325)	21-116
1407 3809	IC - M66310P (A326)	21-110
1408 0919	IC - MB3863PSZ - G	21-111
1601 7634	Resistor Array - 220 $\Omega$ 1/8W $\pm$ 5%	21-112
1606 1332	Capacitor - 1000pF 50V	21-113
1606 1336	Capacitor - 10000pF -20% +80% 50V	21-114
1611 4102	Resistor - 1K $\Omega$ 1/4T $\pm$ 5%	21-115